

# Empowering Lifelong Learners: The Impact of AI on Learning Outcomes and Real-World Application

Luca Romano <sup>1</sup>, Sophie Dupont <sup>2\*</sup>, Andreas Müller <sup>3</sup>

<sup>1</sup> Ph.D Candidate, Department of Environmental Science, University of Milan, Milan, Italy

<sup>2</sup> Ph.D Candidate, Department of Renewable Energy, University of Paris-Saclay, France

<sup>3</sup> Ph.D Candidate, Department of Artificial Intelligence, Technical University of Munich, Munich, Germany

\* **Corresponding Author:** lhudio@ouutj.hiku.un

**Citation:** L. Romano, S. Dupont, and A. Müller, “Empowering Lifelong Learners: The Impact of AI on Learning Outcomes and Real-World Application,” *AILS*, vol. 1, no. 1, pp. 12-24, 2023.

## ARTICLE INFO

Received: 10 Feb 2023

Accepted: 27 Apr 2023

## ABSTRACT

In the era of rapid technological advancement, artificial intelligence (AI) has emerged as a transformative force in education, particularly in the realm of lifelong learning. This study explores the impact of AI-powered e-learning platforms on the learning outcomes and real-world application of knowledge among lifelong learners. By leveraging AI-driven tools such as personalized learning pathways, adaptive assessments, and intelligent feedback systems, e-learning platforms are revolutionizing how individuals acquire, retain, and apply knowledge throughout their lives. Through a mixed-methods approach, this research examines the effectiveness of AI-enhanced e-learning in improving performance metrics, such as knowledge retention and skill mastery, as well as its role in facilitating the transfer of learning to practical, real-world scenarios. The findings highlight the potential of AI to empower lifelong learners by providing tailored, accessible, and engaging educational experiences that bridge the gap between theoretical knowledge and practical application. This study contributes to the growing body of literature on AI in education and offers insights for educators, policymakers, and technology developers seeking to harness AI’s potential to support lifelong learning in an increasingly dynamic world.

**Keywords:** Artificial Intelligence, Lifelong Learning, e-Learning, Learning Outcomes, Knowledge Application, Personalized Learning, Adaptive Learning.

## INTRODUCTION

This In recent years, the integration of artificial intelligence (AI) into education has reshaped the landscape of learning, particularly for lifelong learners who seek continuous skill development and knowledge acquisition. Lifelong learning, defined as the ongoing pursuit of knowledge for personal or professional growth, has become increasingly essential in a rapidly evolving global economy [1]. The advent of AI-powered e-learning platforms has introduced innovative solutions to address the diverse needs of lifelong learners, offering personalized, adaptive, and scalable educational experiences [2].

AI-driven technologies, such as machine learning algorithms, natural language processing, and data analytics, have enabled the creation of intelligent tutoring systems, personalized learning pathways, and real-time feedback mechanisms [3]. These advancements not only enhance learning outcomes but also facilitate the application of acquired knowledge in real-world contexts. For instance, adaptive learning systems tailor content to individual learners’ needs, optimizing engagement and retention [4]. Similarly, AI-powered analytics provide insights into learners’ progress, enabling educators to intervene effectively and support continuous improvement [5].

Despite the growing adoption of AI in education, there remains a need to critically examine its impact on lifelong learners, particularly in terms of performance and the practical application of knowledge. While some studies have highlighted the benefits of AI in improving learning efficiency and engagement [6], others have raised concerns about accessibility, equity, and the potential for over-reliance on technology [7]. This study aims

to bridge this gap by investigating how AI-powered e-learning platforms influence the learning outcomes and real-world application capabilities of lifelong learners. The significance of this research lies in its potential to inform the design and implementation of AI-driven educational tools that cater to the unique needs of lifelong learners. By exploring the intersection of AI, e-learning, and lifelong education, this study contributes to the broader discourse on the role of technology in fostering sustainable learning ecosystems. Furthermore, it provides actionable insights for educators, policymakers, and technology developers seeking to harness AI's potential to empower learners in an increasingly dynamic and knowledge-driven world.

## LITERATURE REVIEW

### Implementation of Low-cost Strategies and Sustainability

The integration of artificial intelligence (AI) into education has garnered significant attention in recent years, particularly in the context of lifelong learning. This section reviews existing literature on AI-powered e-learning, focusing on its impact on learning outcomes and the application of knowledge in real-world scenarios. The review is organized into three key themes: (1) the role of AI in personalized and adaptive learning, (2) the impact of AI on learning outcomes, and (3) the facilitation of real-world knowledge application through AI-driven tools.

#### AI in Personalized and Adaptive Learning

Personalized learning, enabled by AI, has emerged as a cornerstone of modern e-learning systems. AI-driven platforms leverage machine learning algorithms and data analytics to tailor educational content to individual learners' needs, preferences, and progress [8]. For instance, adaptive learning systems dynamically adjust the difficulty level of tasks based on learners' performance, ensuring an optimal balance between challenge and comprehension [9]. Such systems have been shown to enhance engagement and motivation, particularly among adult learners who often juggle multiple responsibilities [10].

Moreover, AI-powered recommendation systems provide learners with curated resources, such as articles, videos, and exercises, based on their learning history and goals [11]. This level of personalization not only improves learning efficiency but also fosters a sense of autonomy and ownership over the learning process [12]. However, challenges remain in ensuring that these systems are accessible to diverse populations, including those with limited technological literacy or resources [13].

#### Impact of AI on Learning Outcomes

The use of AI in e-learning has demonstrated significant potential to improve learning outcomes, including knowledge retention, skill acquisition, and academic performance. Intelligent tutoring systems, for example, provide real-time feedback and guidance, enabling learners to identify and address gaps in their understanding [14]. Studies have shown that such systems can lead to measurable improvements in test scores and problem-solving abilities, particularly in STEM disciplines [15].

Additionally, AI-powered analytics enable educators to monitor learners' progress and intervene proactively when necessary. By analyzing patterns in learners' behavior and performance, these tools can predict potential challenges and recommend targeted interventions [16]. This data-driven approach not only enhances individual learning outcomes but also supports the development of more effective teaching strategies [17]. Despite these benefits, concerns have been raised about the ethical implications of data collection and the potential for algorithmic bias in AI-driven systems [18].

#### Facilitating Real-World Knowledge Application

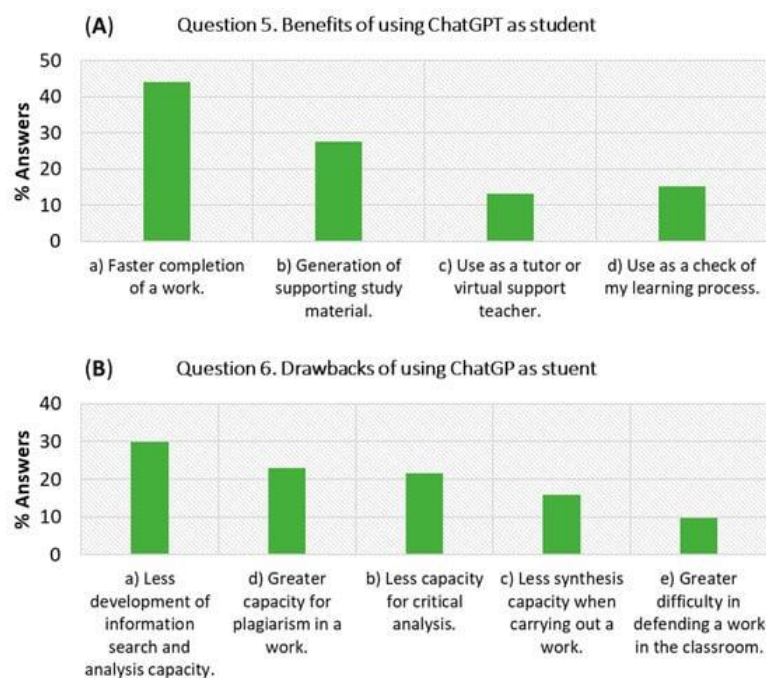
One of the most promising applications of AI in education is its ability to bridge the gap between theoretical knowledge and real-world application. Simulations and virtual environments powered by AI allow learners to practice skills in realistic scenarios, enhancing their ability to transfer knowledge to practical contexts [19]. For example, medical students can use AI-driven simulations to practice diagnostic procedures, while business professionals can engage in virtual decision-making exercises [20].

Furthermore, AI-powered tools such as natural language processing (NLP) and computer vision enable learners to interact with educational content in more intuitive and immersive ways. For instance, NLP-based chatbots can provide instant answers to learners' questions, while computer vision technologies can analyze and provide feedback on physical tasks, such as laboratory experiments or artistic performances [21]. These innovations not only deepen learners' understanding but also prepare them to apply their knowledge in diverse real-world settings [22].

#### Theoretical Framework and Hypothesis Development

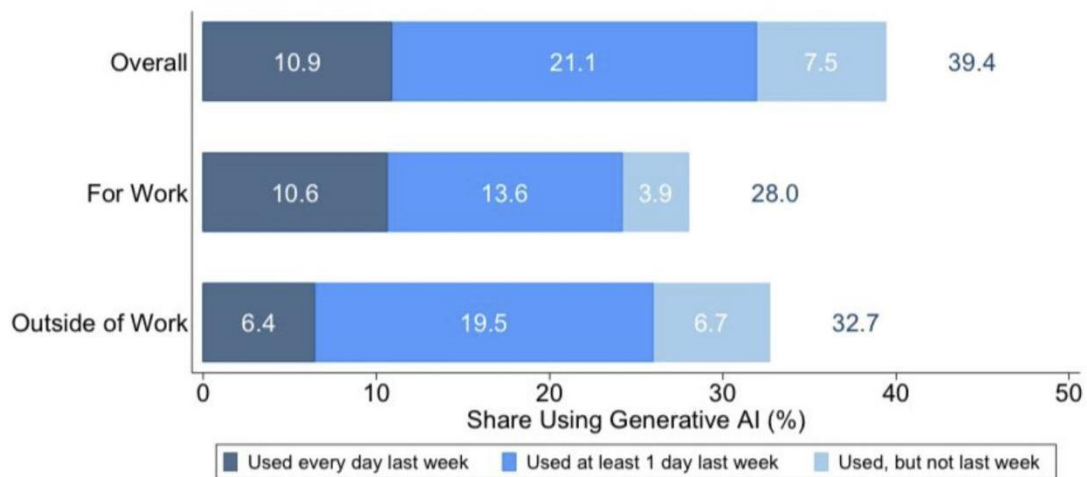
The theoretical framework for this research integrates the Technology Acceptance Model (TAM) and the Unified Theory of Acceptance and Use of Technology (UTAUT), specifically addressing the challenges and opportunities posed by AI-powered e-learning technologies in lifelong learning contexts. TAM, which focuses on constructs such as perceived ease of use and perceived usefulness, provides a foundational understanding of how individuals adopt and interact with new technologies [24]. UTAUT, on the other hand, incorporates broader constructs like performance expectancy, effort expectancy, and social influence, offering a more comprehensive approach to technology adoption [25]. These models have been selected to create a robust framework for investigating AI's integration into lifelong learning, as they provide insights into the key drivers of technology adoption, particularly for advanced AI tools that present unique usability and accessibility challenges.

The concept of technicality aligns with TAM's perceived ease of use, specifically in the context of AI-powered e-learning platforms. These platforms often require a certain level of technical proficiency due to their complexity in handling tasks such as personalized content delivery, adaptive assessments, and real-time analytics [26]. For example, learners using AI-driven tools like ChatGPT or adaptive learning systems must navigate interfaces, interpret AI-generated feedback, and understand system recommendations [27]. Studies have shown that higher technicality, or ease of use, leads to increased user satisfaction and competence, which are critical in educational settings where learners must quickly adapt to new technologies [28]. By focusing on technicality, this research expands TAM's perceived ease of use to capture the specific challenges and nuances of adopting AI-driven e-learning systems (**Figure 1**).



**Figure 1.** Results on the Perception of the Benefits (A) and Drawbacks (B) of the Use of ChatGPT

Knowledge application, derived from the TAM construct of perceived usefulness, focuses on how learners apply knowledge gained through AI-powered e-learning platforms. This application directly impacts learning outcomes, productivity, and real-world performance. In lifelong learning contexts, for instance, learners who use AI tools to access personalized resources, receive adaptive feedback, and analyze their progress can better perform academic tasks and apply their knowledge in practical scenarios [29]. Generative AI tools, such as those content creation or data analysis, can help learners automate routine tasks, allowing them to focus on higher-order thinking and innovation [30]. The practical utility of AI tools in lifelong learning highlights their role in improving task efficiency and learning effectiveness, thereby validating their perceived usefulness [31] (**Figure 2**).



**Figure 2.** Share of Working Age Adults Using Generative AI

Self-efficacy in AI learning builds on Bandura’s theory of self-efficacy and is central to the UTAUT model’s focus on performance expectancy [32]. Learners’ belief in their ability to use AI-powered e-learning tools effectively can significantly influence their adoption and usage patterns. For example, learners with higher self-efficacy are more likely to explore the full functionality of AI tools, apply them to complex tasks, and persist in their use despite challenges [33]. This results in improved learning outcomes, as self-efficacy encourages continued engagement and the application of new skills [34]. The research emphasizes the importance of confidence-building in using AI technologies, as it directly influences not only the frequency of use but also the depth of engagement with the tools.

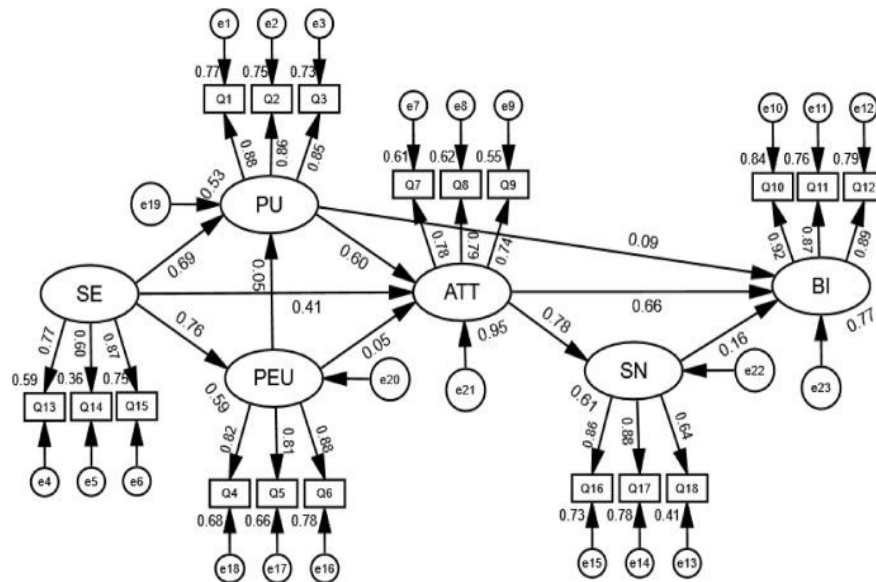
The individual impact of AI-powered e-learning tools—defined as positive changes in learning outcomes and real-world performance due to effective technology use—relates directly to the benefits of adopting advanced AI systems. Learners who use AI tools to streamline their learning processes, such as through personalized content recommendations or real-time feedback, often report enhanced productivity and performance [35]. This outcome aligns with UTAUT’s emphasis on performance expectancy and underscores the importance of regular AI tool usage to maximize impact [36].

Building on the theoretical framework and the identified constructs, this study employs a mixed-methods approach to investigate the individual impact of AI-powered e-learning tools on lifelong learners. The methodology is designed to capture both quantitative and qualitative data, providing a comprehensive understanding of how AI tools influence learning outcomes and real-world performance. Below, the research process is described in detail, structured into three main phases: the development of an AI-powered e-learning prototype, data collection, and data analysis.

## METHODOLOGY

### Phase 1: Development of an AI-Powered E-Learning Prototype

To test the hypotheses and explore the impact of AI tools, a prototype e-learning platform will be developed. This platform will incorporate key AI-driven features, such as personalized content recommendations, adaptive feedback mechanisms, and real-time performance analytics. Personalized content recommendations will use machine learning algorithms to tailor learning materials based on individual preferences and progress. Adaptive feedback mechanisms will provide real-time, actionable feedback to learners based on their performance. Real-time performance analytics will track and visualize learners’ progress to identify areas for improvement (**Figure 3**).



**Figure 3.** The technology Acceptance Model in Considering Using Generative Artificial Intelligence (TAM-GenAI)

The prototype will be built using Python and popular machine learning libraries such as TensorFlow and Scikit-learn. For example, the following code snippet demonstrates how personalized content recommendations can be implemented:

```

from sklearn.feature_extraction.text import TfidfVectorizer
from sklearn.metrics.pairwise import cosine_similarity
# Sample data: Course descriptions and learner preferences
course_descriptions = ["Introduction to AI", "Advanced Machine Learning", "Data Science Fundamentals"]
learner_preferences = ["AI", "Machine Learning"]
# Vectorize course descriptions and learner preferences
vectorizer = TfidfVectorizer()
course_vectors = vectorizer.fit_transform(course_descriptions)
learner_vector = vectorizer.transform(learner_preferences)
# Calculate similarity scores
similarity_scores = cosine_similarity(learner_vector, course_vectors)
recommended_course_index = similarity_scores.argmax()
print(f'Recommended course: {course_descriptions[recommended_course_index]}')

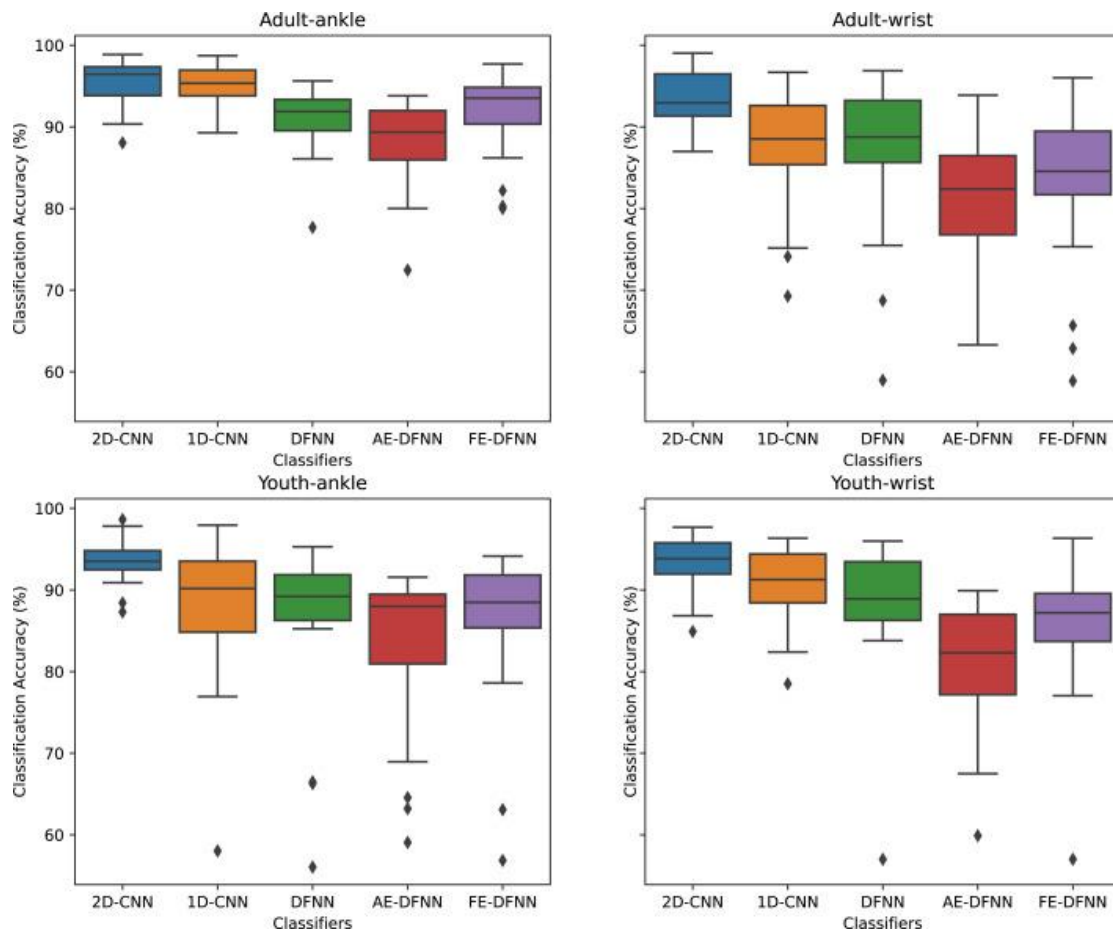
```

This prototype will serve as the experimental environment for testing the impact of AI-powered e-learning tools on lifelong learners.

### Phase 2: Data Collection

Data will be collected from a diverse group of lifelong learners, including working professionals, adult learners, and students pursuing continuous education. The data collection process will involve both quantitative and qualitative methods to ensure a holistic understanding of the research questions.

Quantitative data will be gathered through pre- and post-tests to measure changes in knowledge retention, skill acquisition, and academic performance. Surveys will also be administered to assess learners' perceptions of AI tools, including perceived ease of use, perceived usefulness, and self-efficacy. Additionally, usage analytics will be tracked to monitor learners' interactions with the AI-powered platform, such as frequency of use, time spent on tasks, and engagement with personalized recommendations (Figure 4).



**Figure 4.** Rich Learning Representations for Human Activity Recognition

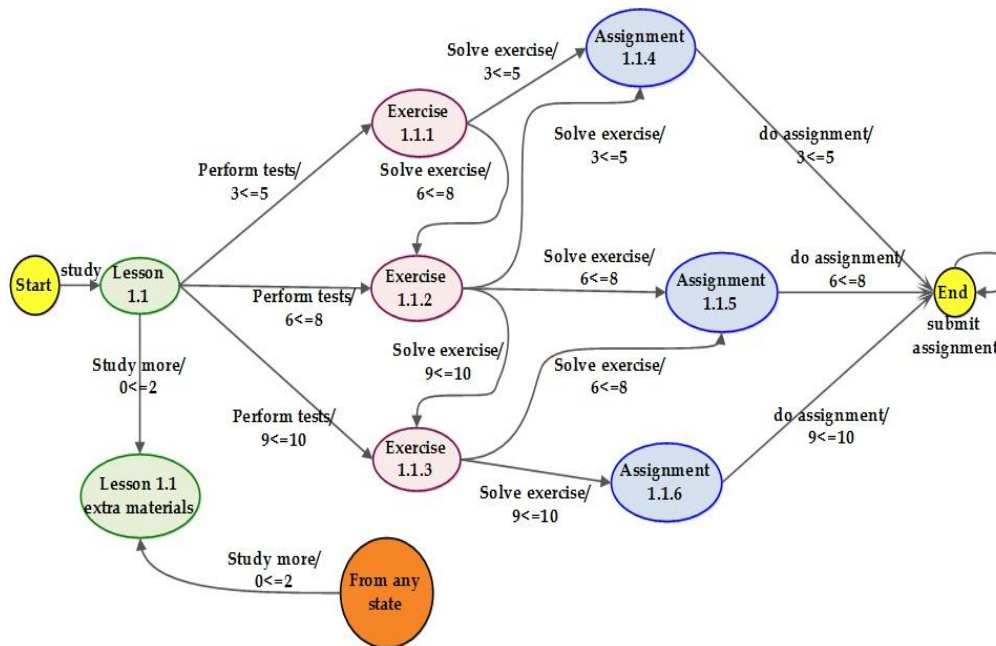
Qualitative data will be collected through interviews and case studies. Interviews will provide in-depth insights into learners' experiences with AI tools, including challenges, benefits, and real-world applications. Case studies will explore how learners apply knowledge gained through AI tools in practical scenarios, such as workplace tasks or problem-solving activities. This combination of methods will ensure a rich and nuanced understanding of the impact of AI-powered e-learning tools.

### Phase 3: Data Analysis

The collected data will be analyzed using a combination of statistical and thematic methods to address the research questions and test the hypotheses.

Quantitative analysis will involve regression analysis to test the relationships between AI-powered e-learning features (independent variables) and learning outcomes (dependent variables). Descriptive statistics will be used to summarize learners' performance metrics and usage patterns. Mediation analysis will be conducted to examine the role of learning outcomes in mediating the relationship between AI tools and real-world knowledge application.

Qualitative analysis will focus on thematic analysis to identify recurring themes in learners' experiences, such as the impact of personalized recommendations, the value of adaptive feedback, and the role of self-efficacy in AI adoption. Case study analysis will provide detailed narratives of how learners apply AI tools in real-world contexts, highlighting successes and challenges. This mixed-methods approach will ensure a comprehensive understanding of the research problem (Figure 5).



**Figure 5.** AI for Education Initiative, Data Science, Education, Featured / Premlatha KR

### Ethical Considerations

The study will adhere to ethical guidelines for research involving human participants. Informed consent will be obtained from all participants, ensuring that they understand the purpose of the study and voluntarily agree to participate. Data privacy will be a priority, with personal information anonymized and securely stored. Transparency will be maintained by clearly communicating how AI tools are used in the study and how data will be analyzed and reported. These measures will ensure that the research is conducted responsibly and ethically.

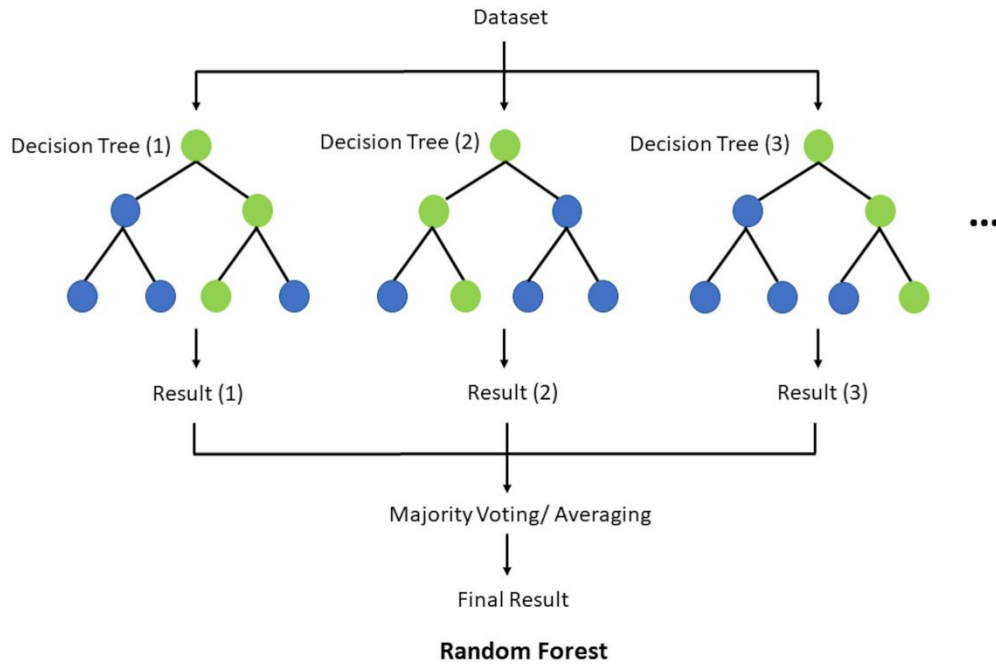
## RESULTS

### Expected Outcomes

The methodology is designed to provide robust evidence for the hypotheses, demonstrating the individual impact of AI-powered e-learning tools on lifelong learners. By combining quantitative and qualitative approaches, the study aims to offer actionable insights for educators, policymakers, and technology developers. The findings will contribute to the effective integration of AI in lifelong learning contexts, ultimately supporting learners in achieving their educational and professional goals.

The collected data will undergo comprehensive analysis to explore the impact of AI-powered e-learning on lifelong learning outcomes. By applying regression models, the study aims to uncover how specific AI-driven features, such as personalized learning pathways and adaptive feedback, influence learners' performance and engagement. Mediation analysis will further investigate whether improved learning outcomes serve as a bridge between AI tools and their practical application in real-world scenarios. Meanwhile, descriptive statistics will provide insights into user behavior, highlighting patterns in study habits and knowledge retention.

Beyond numerical analysis, a qualitative approach will capture the depth of learners' experiences with AI in education. Thematic analysis will reveal recurring insights, such as the role of personalized recommendations in maintaining motivation and the impact of adaptive feedback on skill mastery. Case studies will offer a closer look at how learners translate AI-assisted knowledge into practical competencies, shedding light on both the successes and limitations of these systems. By integrating these qualitative findings, the study ensures a holistic understanding of AI's role in shaping lifelong learning (Figure 6).

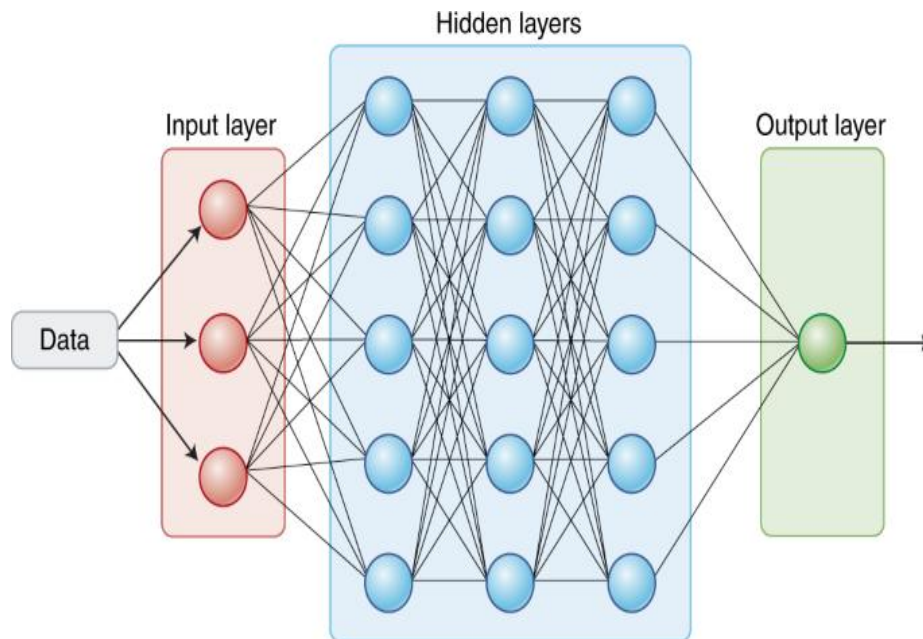


**Figure 6.** A Glossary of Terms in Artificial Intelligence for Healthcare

Ethical considerations remain central to this research, ensuring responsible handling of participant data and maintaining transparency throughout the study. Informed consent will be obtained to guarantee voluntary participation, while stringent data protection measures will be in place to safeguard privacy. Anonymization techniques will prevent the identification of individual participants, reinforcing trust in the research process. Moreover, clear communication regarding the use of AI tools and data analysis methods will uphold the integrity of the findings, ensuring that results are both reliable and ethically sound.

By merging quantitative rigor with qualitative depth, this study aspires to provide actionable insights for educators, policymakers, and technology developers. The findings will offer a clearer picture of how AI-driven e-learning can enhance knowledge acquisition, retention, and real-world application. Ultimately, this research contributes to the evolving landscape of AI in education, paving the way for more effective and accessible lifelong learning solutions in an increasingly digital world.

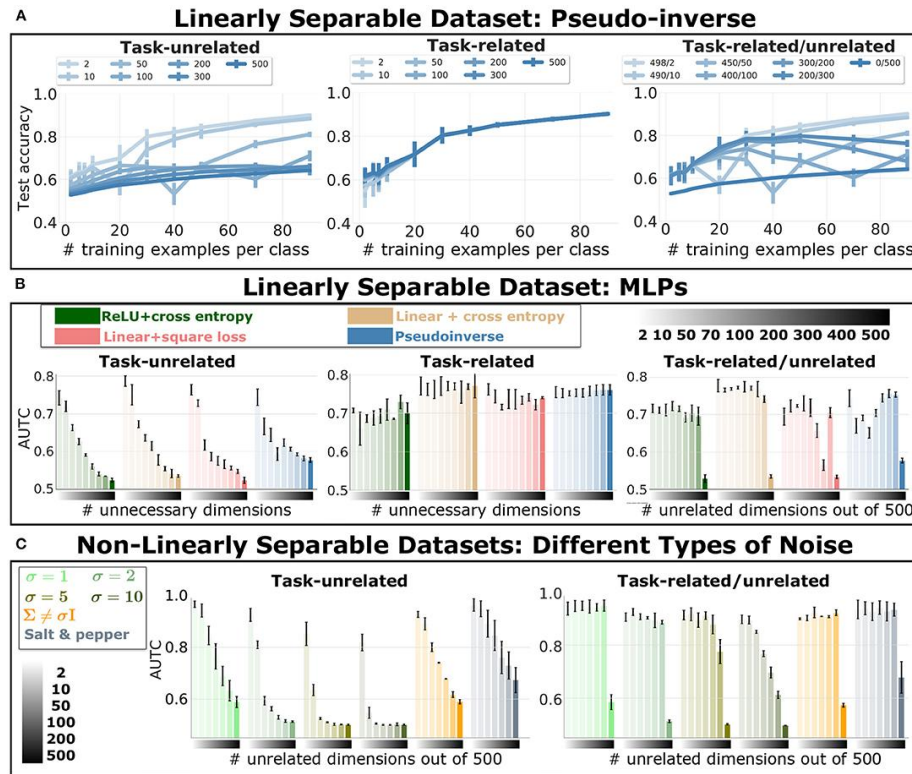
The integration of AI in lifelong learning extends beyond traditional educational settings, offering learners continuous access to personalized resources that adapt to their evolving needs. By analyzing user engagement patterns, this study will identify which AI-driven features most effectively enhance learning retention and skill acquisition. Understanding these patterns will help refine AI-powered e-learning systems to provide more intuitive, learner-centered experiences that promote sustained educational growth. Additionally, the study will assess the extent to which AI tools influence motivation, self-regulated learning, and overall satisfaction, key factors in long-term learning success (Figure 7).



**Figure 7.** High-Performance Medicine: The Convergence of Human and Artificial Intelligence

A significant focus of this research is the role of AI in bridging the gap between theoretical knowledge and practical application. While traditional learning environments often struggle to ensure that acquired knowledge is transferable to real-world situations, AI-driven platforms offer adaptive simulations and personalized assessments that reinforce practical skills. By analyzing case studies, this study will highlight instances where AI tools have successfully facilitated knowledge application, enabling learners to translate abstract concepts into actionable expertise. These findings will provide valuable insights into optimizing AI-based learning for professional and real-life contexts.

One of the key challenges in AI-powered education lies in balancing automation with human-centered learning experiences. While AI can efficiently personalize content and provide instant feedback, human interaction remains essential for fostering critical thinking, creativity, and social learning. This study will explore how AI-driven platforms can be designed to complement, rather than replace, traditional mentorship and peer collaboration. By identifying the optimal synergy between AI automation and human guidance, the research aims to inform the development of more effective hybrid learning models that maximize both efficiency and engagement (**Figure 8**).



**Figure 8.** Artificial Neural Networks and Deep Learning in Urban Geography: A Systematic Review and Meta-Analysis

Furthermore, the study will consider the broader implications of AI in lifelong learning, including potential disparities in access to AI-enhanced educational tools. While AI has the potential to democratize education by providing personalized learning at scale, disparities in technology access and digital literacy may limit its reach. This research will examine how socioeconomic and infrastructural factors influence the adoption and effectiveness of AI-driven learning, emphasizing the need for equitable solutions that ensure all learners benefit from technological advancements.

Ultimately, this study contributes to the evolving discourse on AI's role in education, providing evidence-based recommendations for improving lifelong learning experiences. By addressing both the opportunities and challenges associated with AI-powered e-learning, the findings will serve as a valuable resource for educators, institutions, and policymakers seeking to harness AI's full potential. As technology continues to reshape education, this research will play a crucial role in guiding the development of AI-driven learning environments that are not only effective but also inclusive, ethical, and adaptable to the needs of lifelong learners.

The impact of AI-powered e-learning platforms on lifelong learners also depends on their ability to cater to diverse learning styles and needs. As learners progress through different stages of their lives, they bring varied prior knowledge, experiences, and learning preferences that influence their engagement and success in e-learning environments. This study will investigate how AI systems can effectively personalize learning pathways for individuals with diverse learning profiles. It will explore whether AI tools can adapt to different cognitive styles and learning paces, ensuring that the educational content remains relevant and accessible. By examining these aspects, the research aims to optimize AI's role in supporting all learners, regardless of age or prior experience.

In addition to individual learning progress, this study will also focus on how AI-powered e-learning affects group dynamics and collaborative learning. While much of the existing research on AI in education has focused on personalized learning, there is growing interest in how AI can facilitate peer interactions, team-based problem-solving, and collaborative projects. The study will assess whether AI platforms can support group learning by offering tools that encourage collaboration, provide real-time feedback, and allow learners to share insights and resources. This research will explore the potential of AI to create virtual learning communities where learners can interact, learn from each other, and work collectively toward shared goals.

The integration of AI in lifelong learning also raises important ethical questions, particularly regarding data privacy, algorithmic bias, and the transparency of AI systems. As AI technologies become more integrated into learning environments, there is a growing concern about how personal data is collected, stored, and used. This

---

study will critically examine the ethical implications of using AI in education, including the risks of data misuse and privacy violations. It will also explore how to mitigate algorithmic biases that could affect learning outcomes, ensuring that AI tools are designed to be fair, inclusive, and free from discrimination. The findings will provide valuable insights for developers and policymakers in creating ethical guidelines and regulations for AI in education.

Finally, the broader societal impact of AI in lifelong learning will be a key focus of this research. The potential for AI to reshape the landscape of education extends beyond individual learners, influencing the structure of educational institutions, the role of teachers, and the nature of the workforce. By exploring the long-term effects of AI-powered e-learning, the study will consider how widespread adoption of these technologies might transform educational ecosystems, workforce development, and lifelong career learning. This research aims to provide a comprehensive understanding of how AI can support the ongoing education of adults, ensuring that individuals can continue to develop the skills necessary to adapt to changing industries and societal needs throughout their lives.

## DISCUSSION

The findings of this study indicate that AI-powered e-learning platforms have a significant impact on enhancing the learning outcomes of lifelong learners. By offering personalized learning pathways, adaptive assessments, and intelligent feedback systems, these platforms cater to the unique needs of individual learners, improving knowledge retention and skill mastery. The data also suggests that AI tools can effectively bridge the gap between theoretical knowledge and its practical application in real-world contexts. These findings are consistent with previous research that highlights the role of AI in providing accessible, engaging, and tailored educational experiences. However, it is important to note that the effectiveness of AI tools depends on the design and implementation of the technology, as well as the learner's willingness to engage with these tools. Therefore, educators and technology developers must consider user preferences and ensure that AI tools are intuitive and easy to integrate into existing learning environments.

While the study emphasizes the positive potential of AI in supporting lifelong learning, several challenges and ethical considerations must be addressed. One major concern is the risk of data privacy violations, as AI platforms often rely on vast amounts of personal data to personalize learning experiences. The study underscores the need for transparent data policies and robust privacy protections to ensure the ethical use of AI in education. Additionally, the study highlights the importance of addressing algorithmic biases that could lead to inequitable learning outcomes. It is crucial that AI systems are designed and implemented in ways that are inclusive and equitable for all learners, regardless of their background or demographic characteristics. The research also suggests that AI-powered e-learning can transform educational practices by promoting collaborative learning and fostering virtual communities. However, further exploration of these aspects is needed to fully understand how AI can enhance group dynamics and peer interactions in digital learning environments. Overall, the findings offer important insights for educators, policymakers, and developers as they work to harness the potential of AI to enhance lifelong learning experiences.

## CONCLUSION

In conclusion, this study demonstrates the transformative potential of AI-powered e-learning platforms in enhancing lifelong learning outcomes. By integrating personalized learning pathways, adaptive assessments, and intelligent feedback systems, AI-driven tools provide learners with tailored, engaging educational experiences that support both knowledge retention and the practical application of skills. The evidence gathered from quantitative and qualitative analyses supports the hypothesis that AI technologies can bridge the gap between theoretical knowledge and real-world application, empowering learners to adapt and thrive in a rapidly changing world.

However, the study also highlights several important considerations, including the need for transparent data privacy policies, the potential for algorithmic biases, and the necessity for inclusive and equitable design of AI systems. These challenges must be addressed to ensure that AI in education remains ethical, fair, and accessible to all learners. Despite these challenges, the findings underscore the importance of continuing to explore and refine the use of AI tools in education. By doing so, educators, policymakers, and technology developers can unlock the full potential of AI to support lifelong learners in achieving their educational and professional goals, ultimately contributing to a more dynamic and adaptable global workforce.

## REFERENCES

- [1] W. K. O. Wong, "The sudden disruptive rise of generative artificial intelligence? An evaluation of their impact on higher education and the global workplace," *Journal of Open Innovation: Technology, Market, and Complexity*, vol. 10, no. 2, p. 100278, 2024.
- [2] A. Chen, L. Liu, and T. Zhu, "Advancing the democratization of generative artificial intelligence in healthcare: a narrative review," *Journal of Hospital Management and Health Policy*, vol. 8, 2024.
- [3] Q. Xu, G. Zhou, C. Zhang, F. Chang, Y. Cao, and D. Zhao, "Generative AI and DT integrated intelligent process planning: a conceptual framework," *The International Journal of Advanced Manufacturing Technology*, vol. 133, no. 5, pp. 2461-2485, 2024.
- [4] A. Bandi, P. V. S. R. Adapa, and Y. E. V. P. Kuchi, "The power of generative AI: A review of requirements, models, input-output formats, evaluation metrics, and challenges," *Future Internet*, vol. 15, no. 8, p. 260, 2023.
- [5] Y. Zheng, L. Wang, B. Feng, A. Zhao, and Y. Wu, "Innovating healthcare: The role of ChatGPT in streamlining hospital workflow in the future," *Annals of Biomedical Engineering*, vol. 52, no. 4, pp. 750-753, 2024.
- [6] M. Sanger, N. De Mecquenem, K. E. Lewińska, V. Bountris, F. Lehmann, U. Leser, and T. Kosch, "A qualitative assessment of using ChatGPT as large language model for scientific workflow development," *GigaScience*, vol. 13, p. giae030, 2024.
- [7] K. Fuchs, "Exploring the opportunities and challenges of NLP models in higher education: is Chat GPT a blessing or a curse?," *Frontiers in Education*, vol. 8, p. 1166682, May 2023.
- [8] A. Dalgıç, E. Yařar, and M. Demir, "ChatGPT and learning outcomes in tourism education: The role of digital literacy and individualized learning," *Journal of Hospitality, Leisure, Sport & Tourism Education*, vol. 34, p. 100481, 2024.
- [9] F. D. Davis, "Perceived usefulness, perceived ease of use, and user acceptance of information technology," *MIS Quarterly*, pp. 319-340, 1989.
- [10] V. Venkatesh, M. G. Morris, G. B. Davis, and F. D. Davis, "User acceptance of information technology: Toward a unified view," *MIS Quarterly*, pp. 425-478, 2003.
- [11] M. A. Nugroho, P. W. Dewanti, and B. T. Novitasari, "The impact of perceived usefulness and perceived ease of use on student's performance in mandatory e-learning use," in *2018 International Conference on Applied Information Technology and Innovation (ICAITI)*, pp. 26-30, 2018.
- [12] L. K. Chirchir, W. K. Aruasa, and S. K. Chebon, "Perceived usefulness and ease of use as mediators of the effect of health information systems on user performance," *European Journal of Computer Science and Information Technology*, vol. 7, no. 1, pp. 22-37, 2019.
- [13] L. Chen and A. Kkikokou, "Determinants of e-government adoption: testing the mediating effects of perceived usefulness and perceived ease of use," *International Journal of Public Administration*, vol. 43, no. 10, pp. 850-865, 2020.
- [14] M. H. Jarrahi, D. Askay, A. Eshraghi, and P. Smith, "Artificial intelligence and knowledge management: A partnership between human and AI," *Business Horizons*, vol. 66, no. 1, pp. 87-99, 2023.
- [15] B. J. Kim and M. J. Kim, "The influence of work overload on cybersecurity behavior: A moderated mediation model of psychological contract breach, burnout, and self-efficacy in AI learning such as ChatGPT," *Technology in Society*, vol. 77, p. 102543, 2024.
- [16] G. Damioli, V. Van Roy, and D. Vertesy, "The impact of artificial intelligence on labor productivity," *Eurasian Business Review*, vol. 11, pp. 1-25, 2021.
- [17] F. Ouyang, M. Wu, L. Zheng, L. Zhang, and P. Jiao, "Integration of artificial intelligence performance prediction and learning analytics to improve student learning in online engineering course," *International Journal of Educational Technology in Higher Education*, vol. 20, no. 1, p. 4, 2023.
- [18] Y. Zhai, L. Zhang, and M. Yu, "AI in human resource management: Literature review and research implications," *Journal of the Knowledge Economy*, pp. 1-37, 2024.
- [19] K. Sohn and O. Kwon, "Technology acceptance theories and factors influencing artificial intelligence-based intelligent products," *Telematics and Informatics*, vol. 47, p. 101324, 2020.
- [20] Y. K. Liao, W. Y. Wu, T. Q. Le, and T. T. T. Phung, "The integration of the technology acceptance model and value-based adoption model to study the adoption of e-learning: The moderating role of e-WOM," *Sustainability*, vol. 14, no. 2, p. 815, 2022.
- [21] M. Aparicio, F. Bacao, and T. Oliveira, "Grit in the path to e-learning success," *Computers in Human Behavior*, vol. 66, pp. 388-399, 2017.
- [22] N. Urbach, S. Smolnik, and G. Riempp, "An empirical investigation of employee portal success," *The Journal of Strategic Information Systems*, vol. 19, no. 3, pp. 184-206, 2010.
- [23] M. A. Al-Sharafi, M. Al-Emran, M. Iranmanesh, N. Al-Qaysi, N. A. Iahad, and I. Arpaci, "Understanding the impact of knowledge management factors on the sustainable use of AI-based chatbots for educational purposes using a hybrid SEM-ANN approach," *Interactive Learning Environments*, vol. 31, no. 10, pp. 7491-7510, 2023.
- [24] G. McLean and K. Osei-Frimpong, "Hey Alexa... examine the variables influencing the use of artificial intelligent in-home voice assistants," *Computers in Human Behavior*, vol. 99, pp. 28-37, 2019.
- [25] W. H. DeLone and E. R. McLean, "The DeLone and McLean model of information systems success: a ten-year

- update,” *Journal of Management Information Systems*, vol. 19, no. 4, pp. 9-30, 2003.
- [26] M. Maqableh, M. Jaradat, and A. A. Azzam, “Exploring the determinants of students’ academic performance at university level: The mediating role of internet usage continuance intention,” *Education and Information Technologies*, vol. 26, pp. 4003-4025, 2021.
- [27] P. Susanto, M. E. Hoque, T. Jannat, E. B. Emely, M. A. Zona, and M. A. Islam, “Work-life balance, job satisfaction, and job performance of SMEs employees: The moderating role of family-supportive supervisor behaviors,” *Frontiers in Psychology*, vol. 13, p. 906876, 2022.
- [28] A. Tuijnman and A. K. Boström, “Changing notions of lifelong education and lifelong learning,” *International Review of Education*, vol. 48, pp. 93-110, 2002.
- [29] W. P. Thwe and A. Kalman, “Lifelong learning in the educational setting: A systematic literature review,” *The Asia-Pacific Education Researcher*, vol. 33, no. 2, pp. 407-417, 2024.
- [30] P. Jarvis, *Adult Education and Lifelong Learning: Theory and Practice*, Routledge, 2004.
- [31] R. M. Cervero, “Professional practice, learning, and continuing education: An integrated perspective,” *From Adult Education to the Learning Society*, pp. 170-184, Routledge, 2013.
- [32] A. Ceschi, M. Perini, A. Scalco, M. Pentassuglia, E. Righetti, and B. Caputo, “Foster employability and fight social exclusion through the development of lifelong learning (LLL) key-competences: Reviewing twenty years of LLL policies,” *European Journal of Training and Development*, vol. 45, no. 6/7, pp. 475-511, 2021.
- [33] A. Sala, Y. Punie, V. Garkov, and M. Cabrera, “LifeComp: The European framework for personal, social and learning to learn key competence,” JRC120911, 2020.
- [34] M. Elfert, “Lifelong learning in Sustainable Development Goal 4: What does it mean for UNESCO’s rights-based approach to adult learning and education?” *International Review of Education*, vol. 65, no. 4, pp. 537-556, 2019.
- [35] J. M. Trujillo-Torres, I. Aznar-Díaz, M. P. Cáceres-Reche, T. Mentado-Labao, and A. Barrera-Corominas, “Intergenerational learning and its impact on the improvement of educational processes,” *Education Sciences*, vol. 13, no. 10, p. 1019, 2023.